

CERTIFIED LAND CORNER RECORDATION

10 MAY 1988

DESCRIPTION OF CORNER EVIDENCE FOUND, AND ORIGINAL RECORD (if known)

Found 4" x 7" granite stone projecting 5" above ground with 5 grooves on the East and South faces lying in North South fence line

S.6 S.5  
S.7 S.8  
T.13N., R.64W.  
6th P.M.

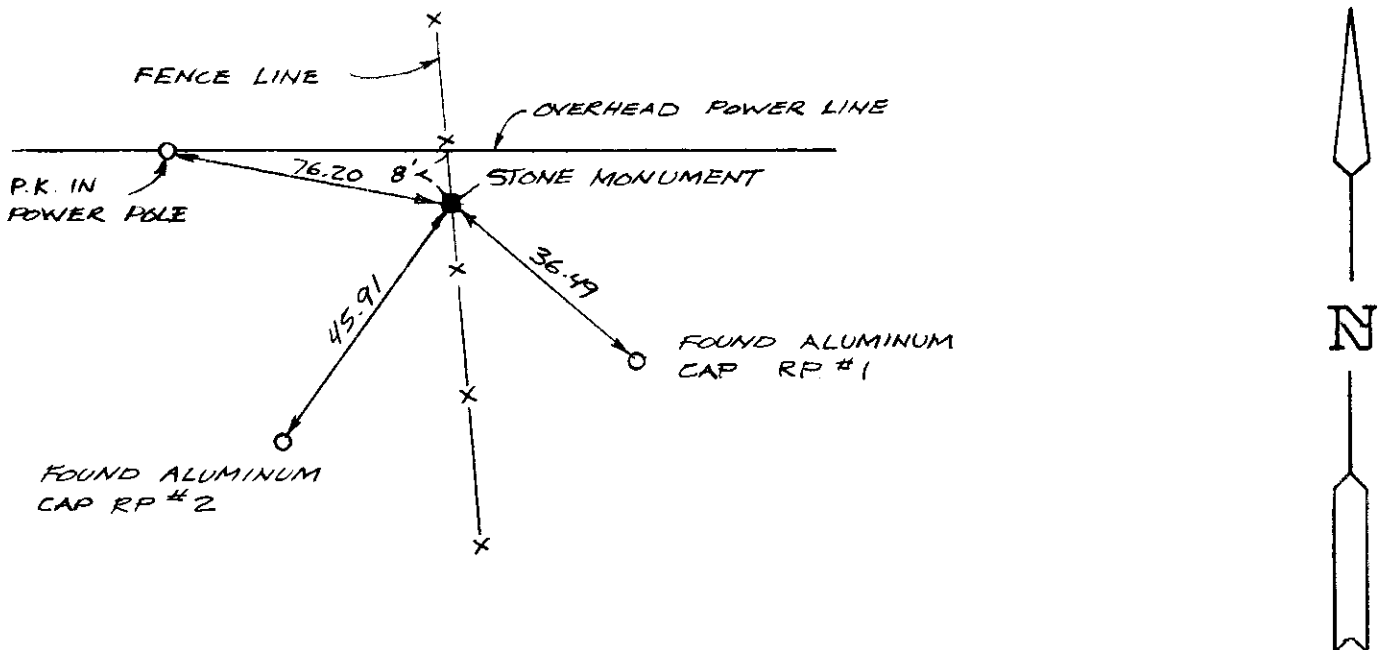
G.L.O. Record - Granite stone, 23" x 10" x 6" - Edwin James & Alfred M. Rogers, Deputy Surveyors, 6 June, 1871.

DESCRIPTION OF MONUMENT AND ACCESSORIES ESTABLISHED TO PERPETUATE THE ORIGINAL LOCATION OF THIS CORNER:

At the corner: Not remonumented

Accessories : Used existing aluminum caps marked RP #1 and RP #2 and additional ties as shown below.

SKETCH, WITH COURSE AND DISTANCE TO ADJACENT CORNER IF DETERMINED IN THIS SURVEY. (May Sketch or Paste Reproduction on Reverse Side.)



I, John A. Steil certify that I have carefully performed or reviewed the work done on the diagrammed corner as reported on this recordation form and approve the same.

*John A. Steil*  
Signature of Surveyor

L.S. 2500  
Registration No.

STATE OF WYOMING,  
Office of Clerk and Recorder,  
County of Laramie

This "corner record" was filed for record on the 5th day of May, 1988, was noted on the cross-index plat and is assigned page No. 1975, in book No. 1259.

*Janet C. Whitehead*  
County Official

Cross Index No.	<u>E-5</u>	T. <u>13N</u>	R. <u>64W</u>	Mer. <u>6th</u>
				Mer.
				Mer.
				Mer.
				Mer.
				Mer.